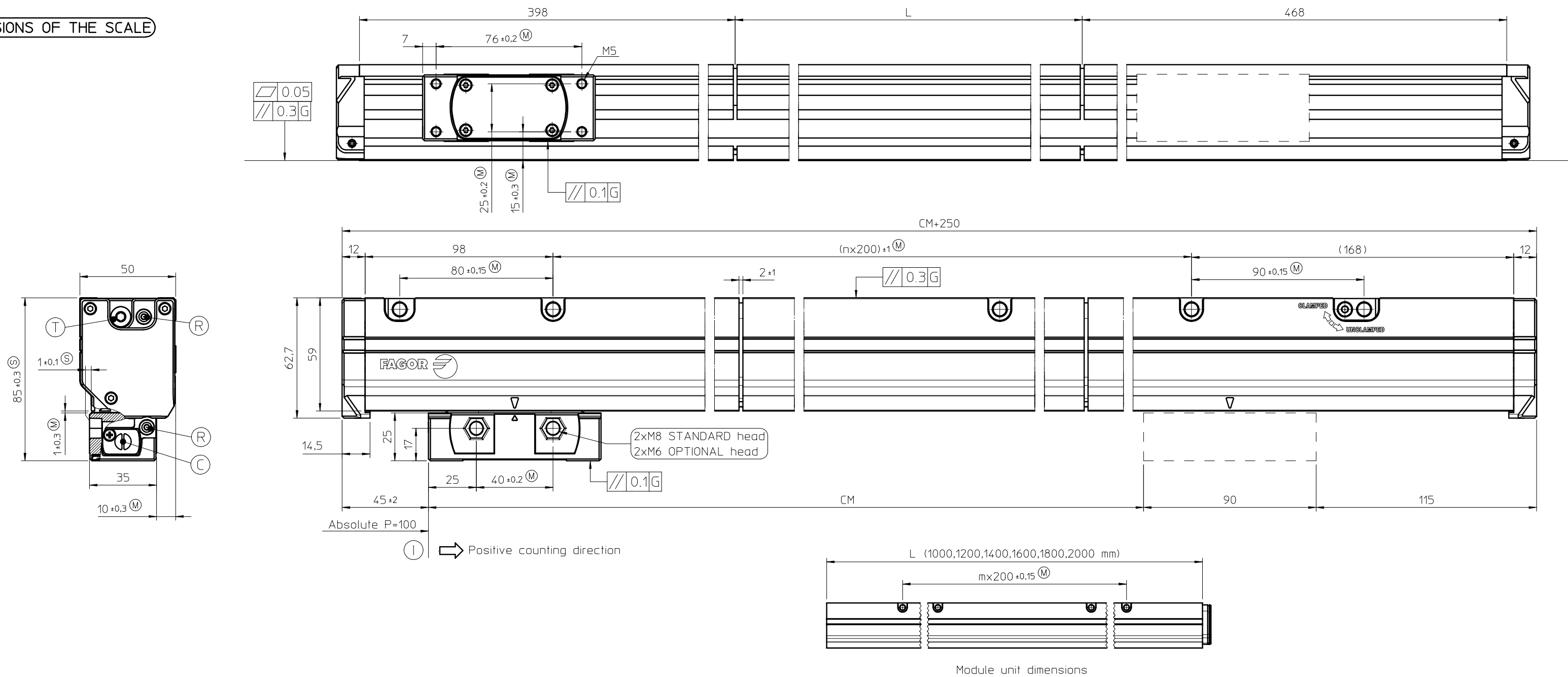


DIMENSIONS OF THE SCALE

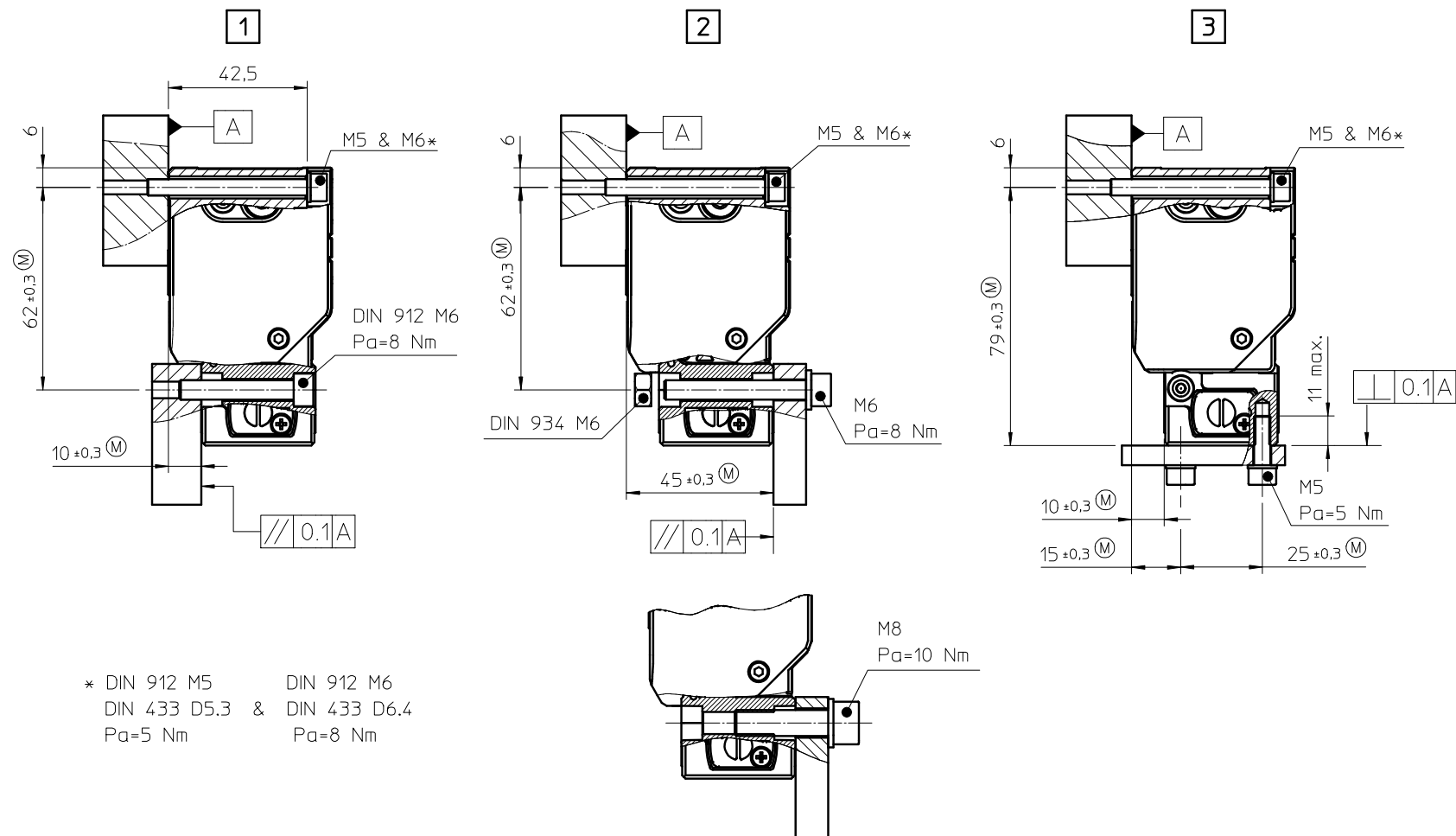


ABBREVIATIONS

- (M) = Assembly sizing set by customer
(S) = Alternative assembly sizing set by the customer
(C) = Connector can be connected to both sides
(R) = Can connect air intake to both sides
(T) = Tape tensor
(I) = Beginning of the measuring length
(N1) = Mounting surfaces and threads must be clean and free of grease
(E1) = Three different types of cable
- cable Ø6mm
- cable Ø4mm
- cable Ø10.5mm (with protection)
Bend radius for flexible configuration for:
- cable Ø6mm: R>60mm
- cable Ø4mm: R>40mm
- cable Ø10.5mm (with protection): R>60mm
Bend radius for rigid configuration for:
- cable Ø6mm: R>24mm
- cable Ø4mm: R>16mm
- cable Ø10.5mm (with protection): R>35mm
(E2) = Cable support
1 2 3 = Mounting options
CM = Measuring length
L = Length of module
G = Machine guideway
Pa = Tightening torque
SW = Size of the hex wrench

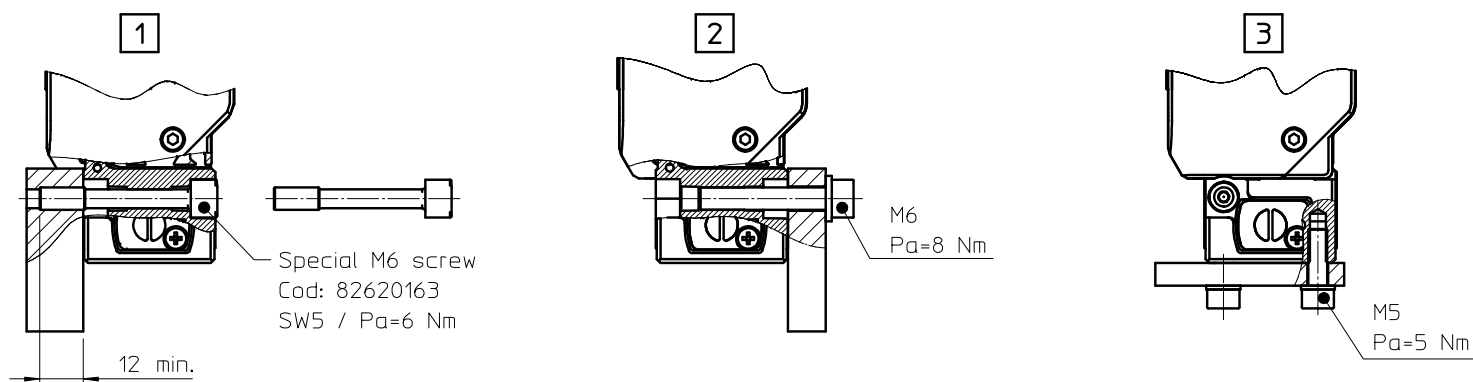
SCALE MOUNTING OPTIONS: HEAD (N1)

STANDARD HEAD



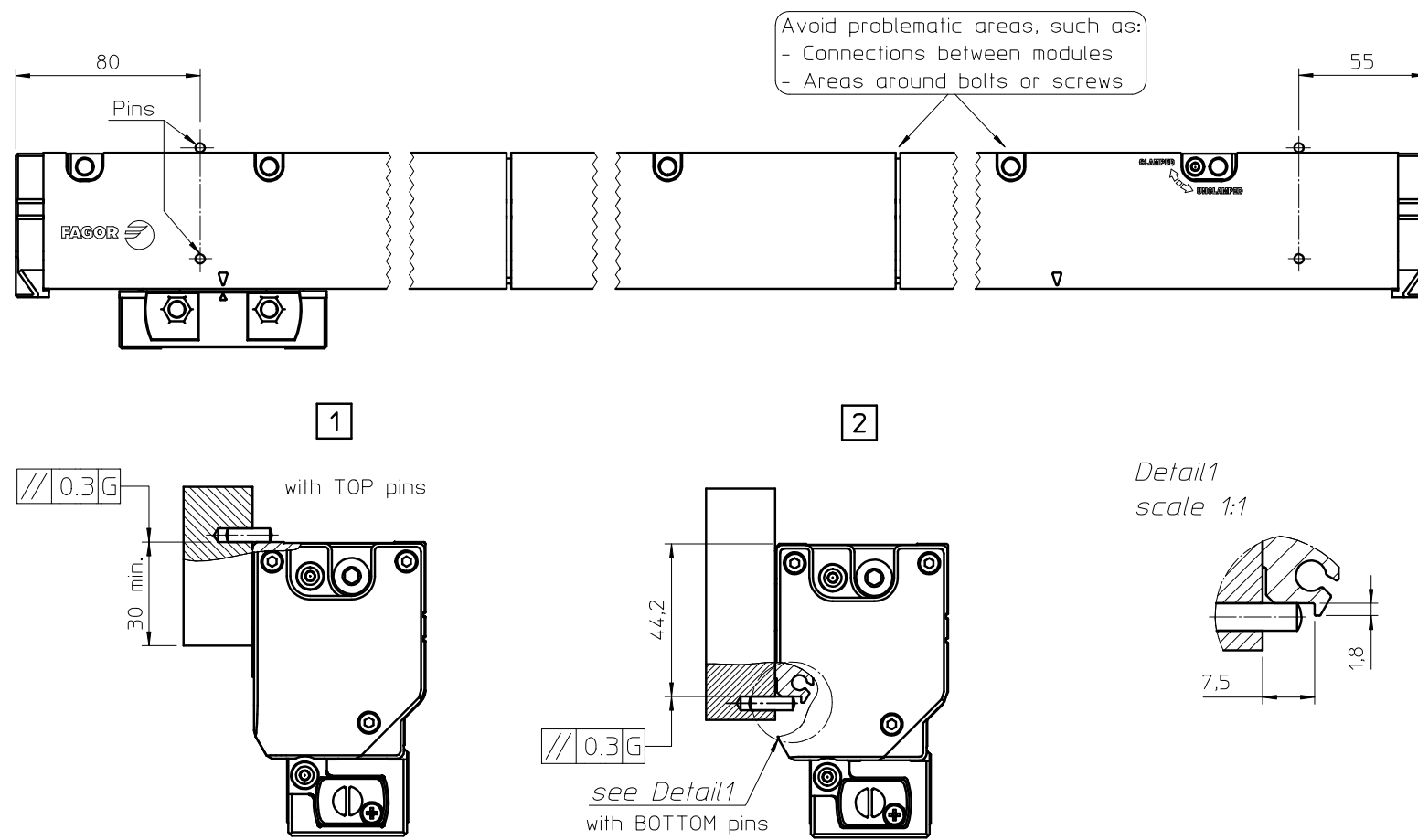
OPTIONAL HEAD

NOTE: rest of dimensions same of the standard head dimensions

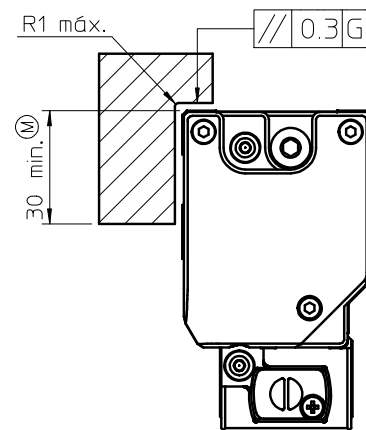


SCALE MOUNTING OPTIONS: SCALE (N1)

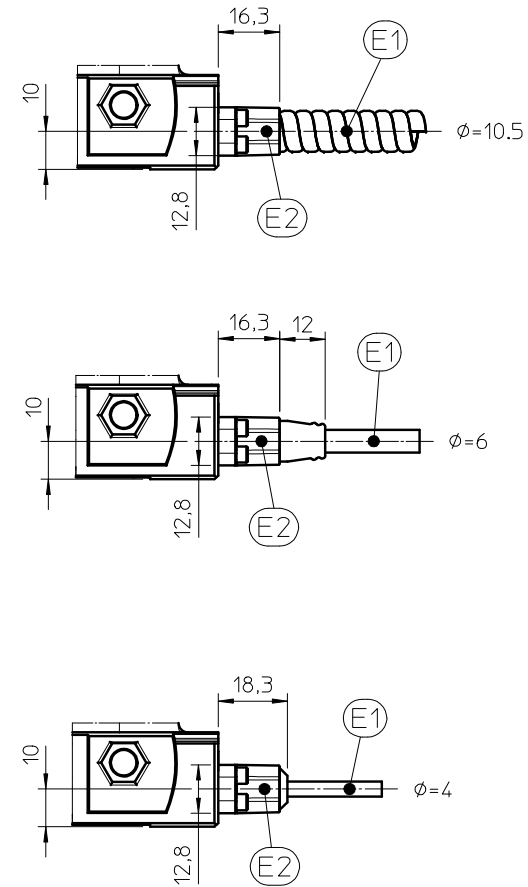
ON PINS




ON MACHINED SURFACE



DIFFERENT TYPES OF CONNECTOR CABLES



						Scale: 1:2
						
						Dimensions in mm
						Tolerancing ISO 8015
						ISO 2768 - mH
						< 6 mm: ±0.2 mm
Rev.	Summary			Propo.	App.	Date
	Linear encoder model L3 modular				Finish	
Nº	Designation		Quant.	Material		Treatment
Drawing N		PT-2-004-0		Date 24-04-2019		
Replaces				Design by ZUNZU		
				Check by ZUNZU		
				Fagor Automation S. Coop. 20500 Mondragón		
				