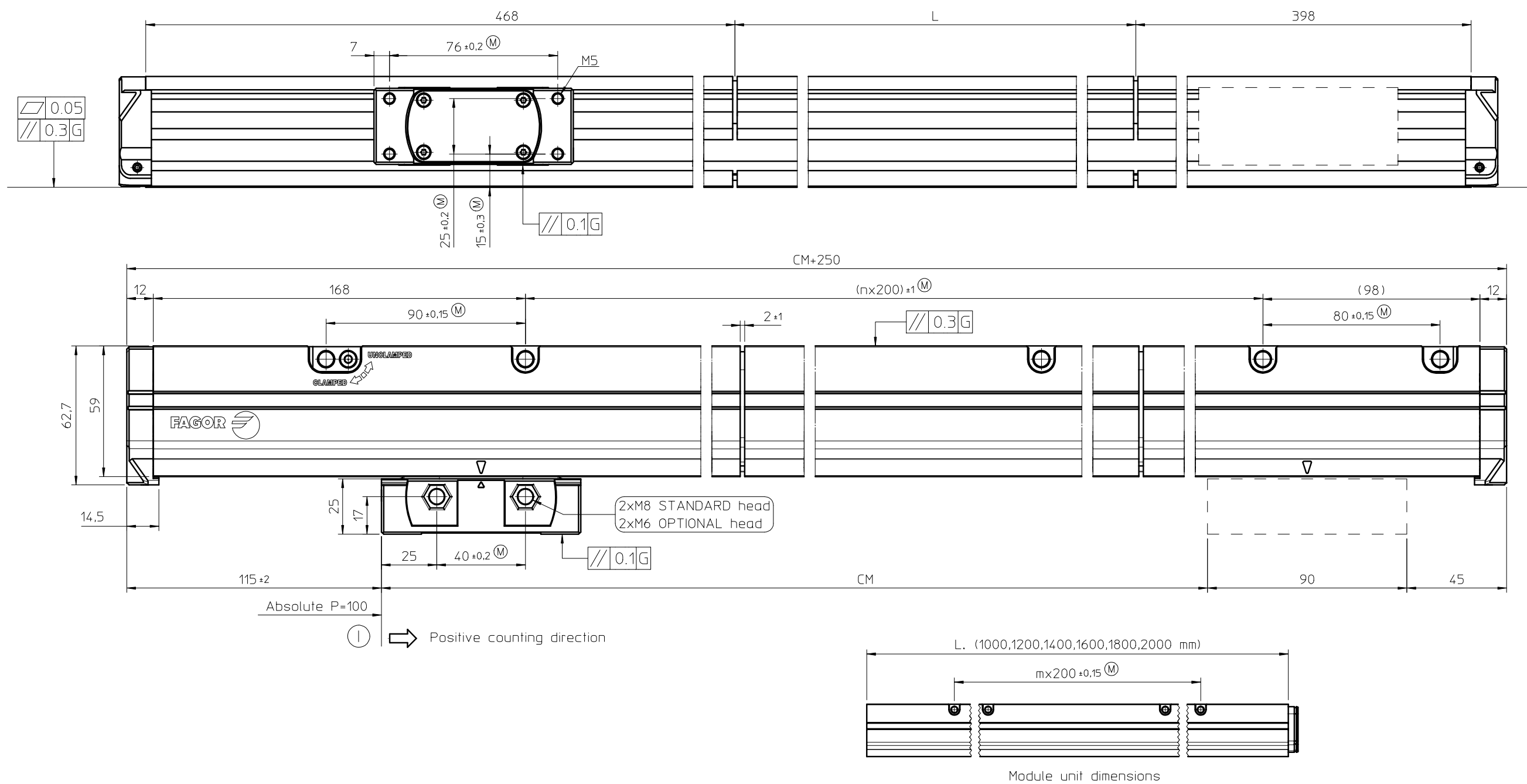
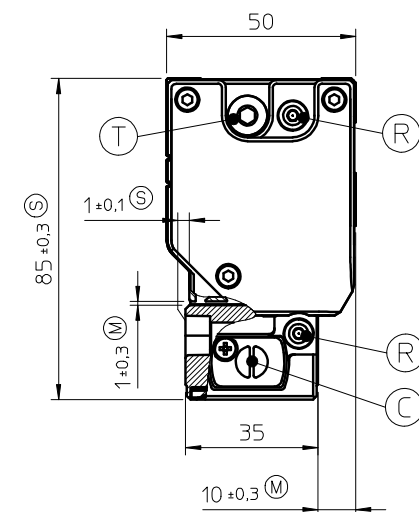


## (DIMENSIONS OF THE SCALE)



## (ABBREVIATIONS)

(M) = Assembly sizing set by customer  
 (S) = Alternative assembly sizing set by the customer  
 (C) = Connector can be connected to both sides  
 (R) = Can connect air intake to both sides  
 (T) = Tape tensor  
 (I) = Beginning of the measuring length  
 (N1) = Mounting surfaces and threads must be clean and free of grease  
 (E1) = Three different types of cable  
     - Cable Ø6mm  
     - Cable Ø4mm  
     - Cable Ø10,5mm (with protection)  
 Bend radius for flexible configuration for:  
     - cable Ø6mm: R>60mm  
     - cable Ø4mm: R>40mm  
     - cable Ø10,5mm (with protection): R>60mm  
 Bend radius for rigid configuration for:  
     - cable Ø6mm: R>24mm  
     - cable Ø4mm: R>16mm  
     - cable Ø10,5mm (with protection): R>35mm  
 (E2) = Cable support  
 2 3 = Mounting options

CM = Measuring length

L = Length of module

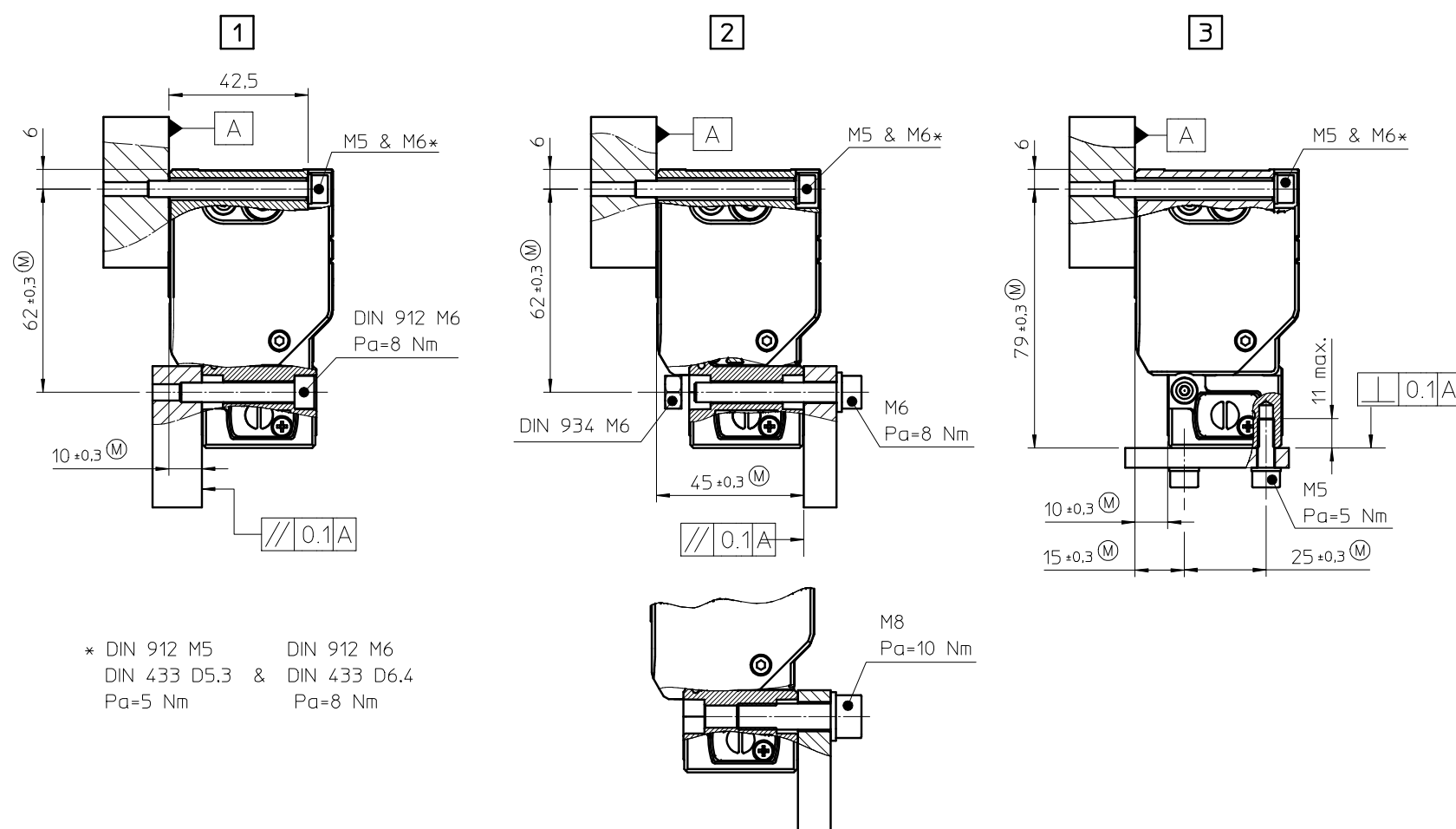
G = Machine guideway

Pa = Tightening torque

SW = Size of the hex wrench

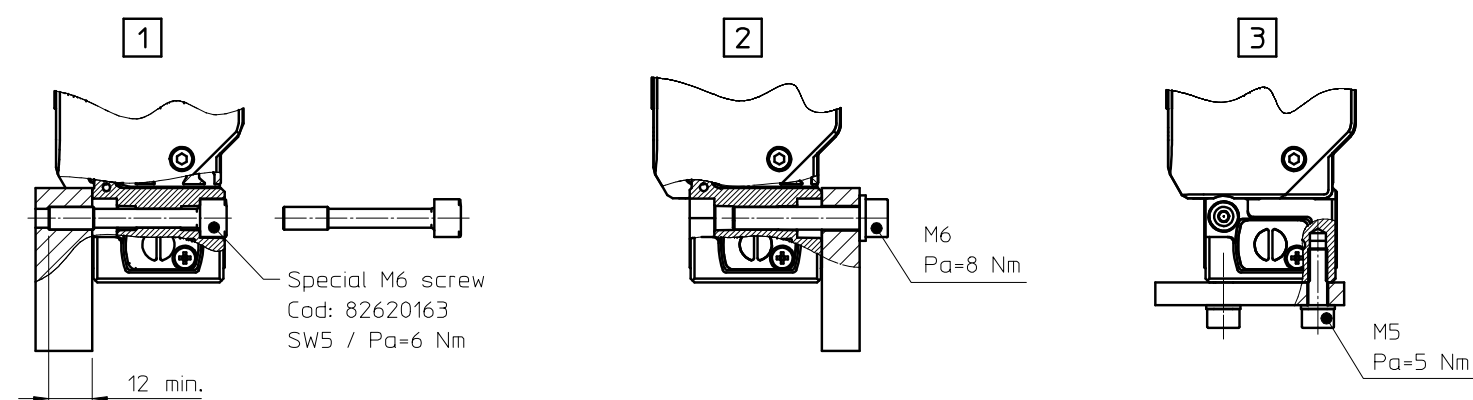
(SCALE MOUNTING OPTIONS: HEAD) (N1)

## STANDARD HEAD



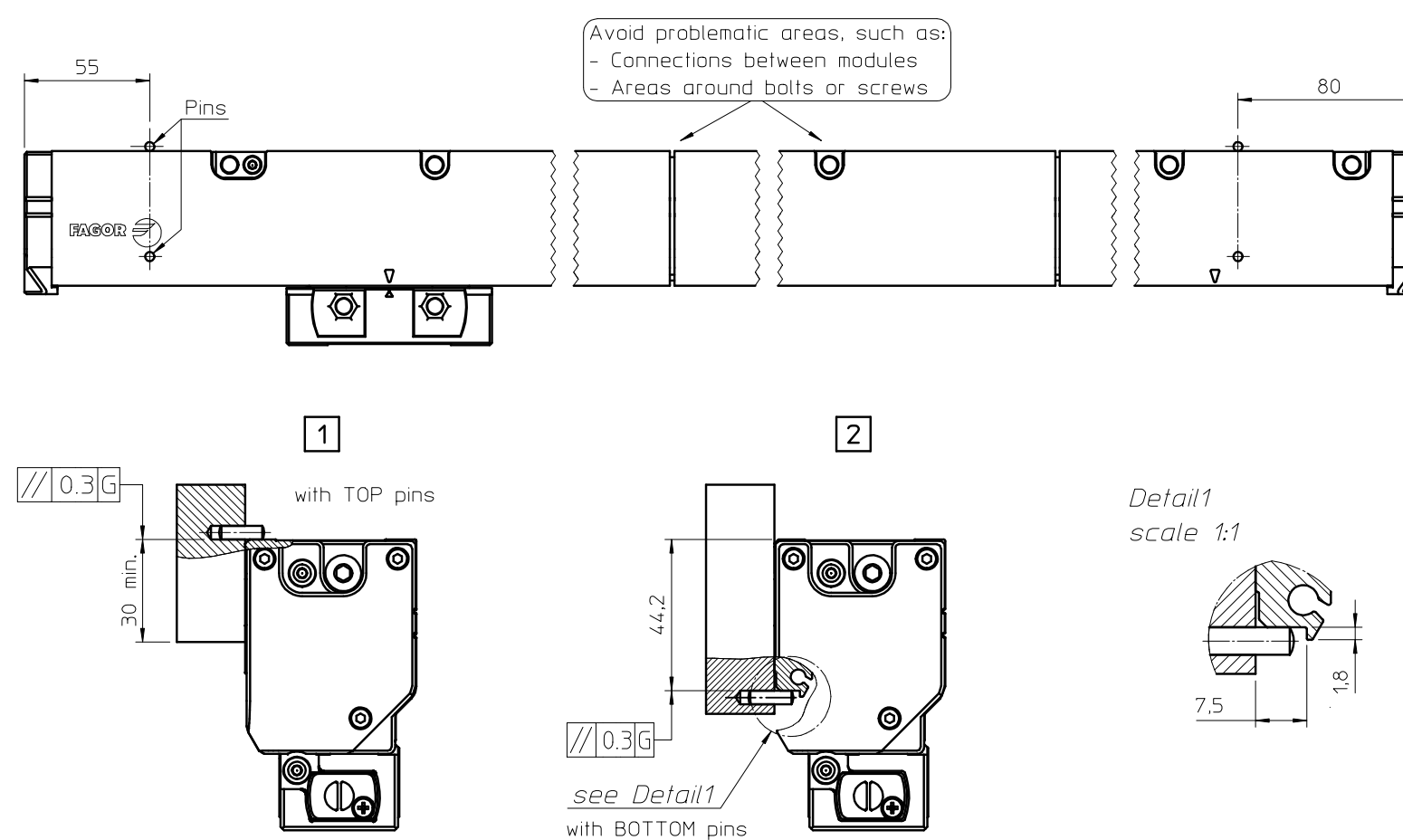
## OPTIONAL HEAD

NOTE: rest of dimensions same of the standard head dimensions

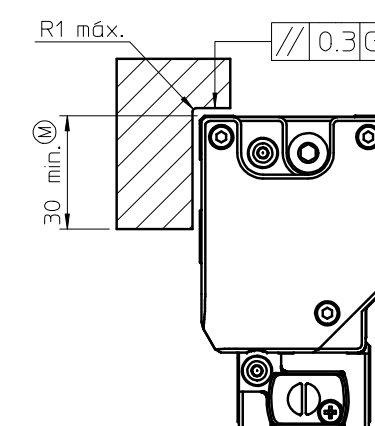


(SCALE MOUNTING OPTIONS: SCALE) (N1)

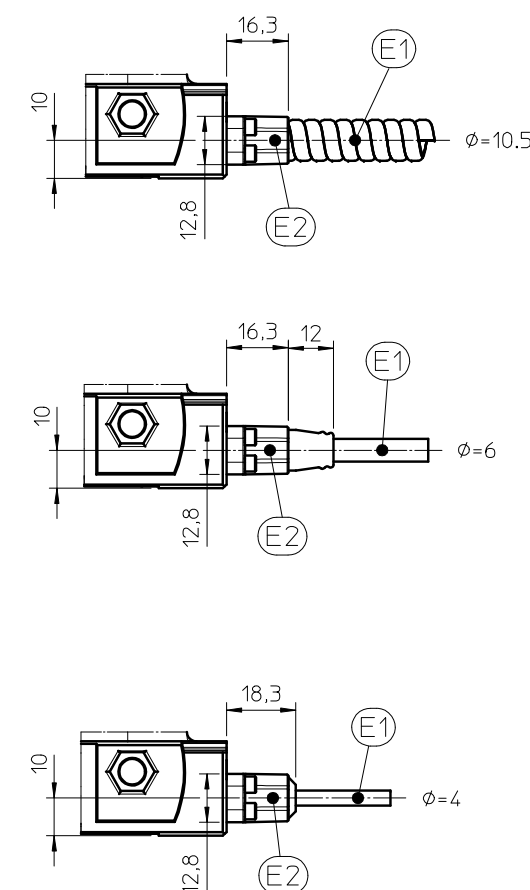
ON PINS





ON MACHINED SURFACE



## DIFFERENT TYPES OF CONNECTOR CABLES



						Scale: 1:2
						
						Dimensions in mm
						Tolerancing ISO 8015
						ISO 2768 - mH
						< 6 mm: ±0.2 mm
Rev.	Summary			Propo.	App.	Date
N°	Linear encoder model L3 modular mirror Designation	Quant.	Material		Finish	Treatment
Drawing N°	PT-2-005-0	Date	24-04-2019	Fagor Automation	S. Coop.	
Replaces		Design by	ZUNZU	20500 Mondragón		
		Check by	ZUNZU			