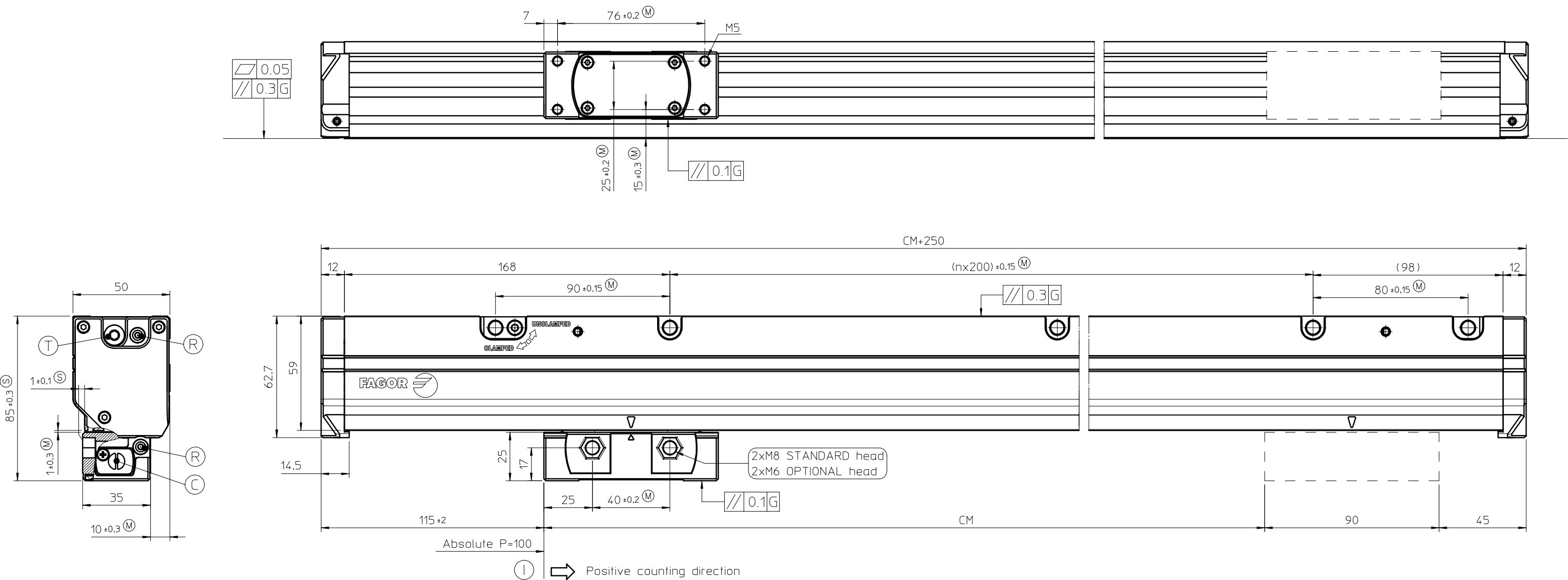


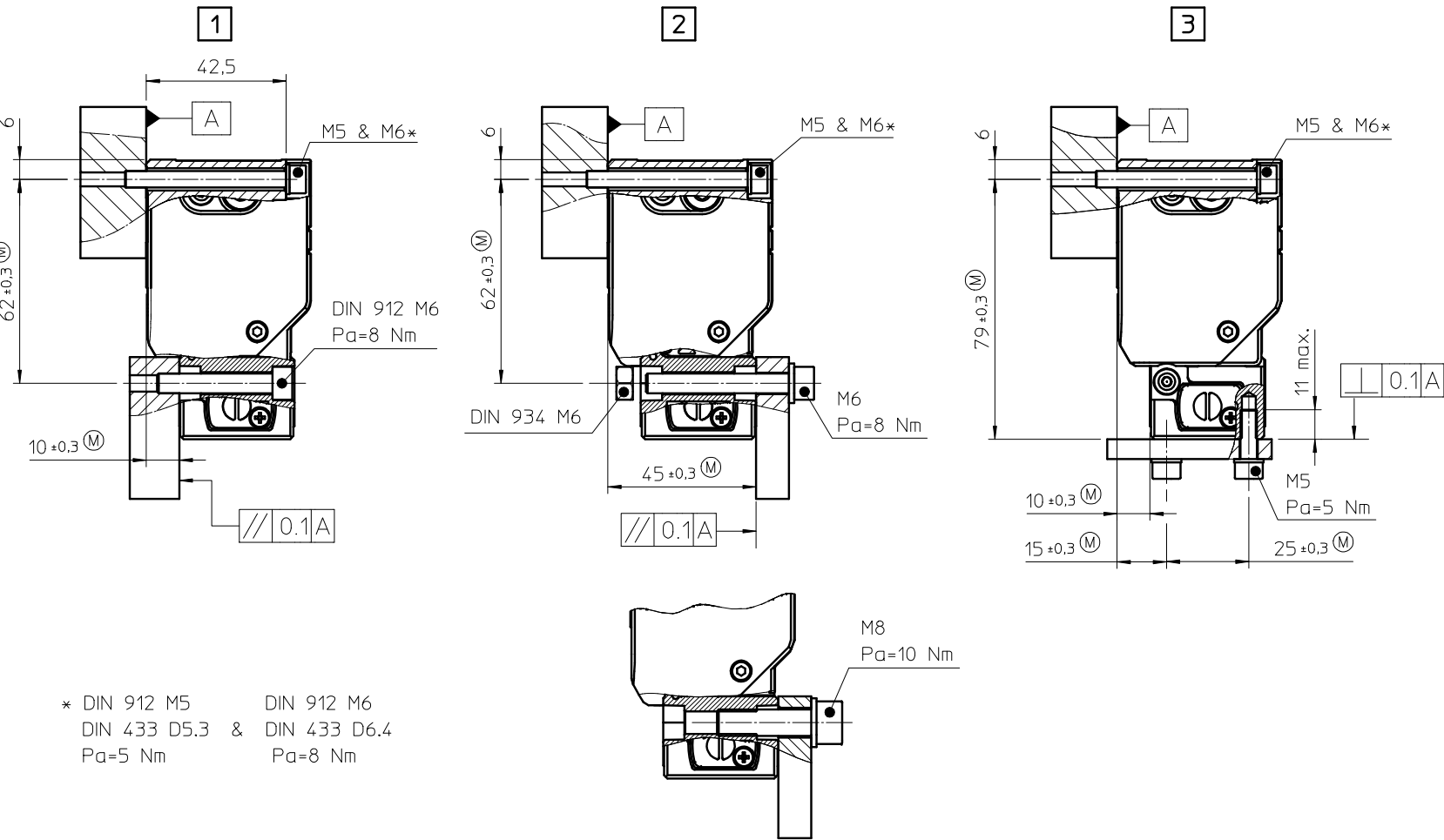
DIMENSIONS OF THE SCALE



ABBREVIATIONS

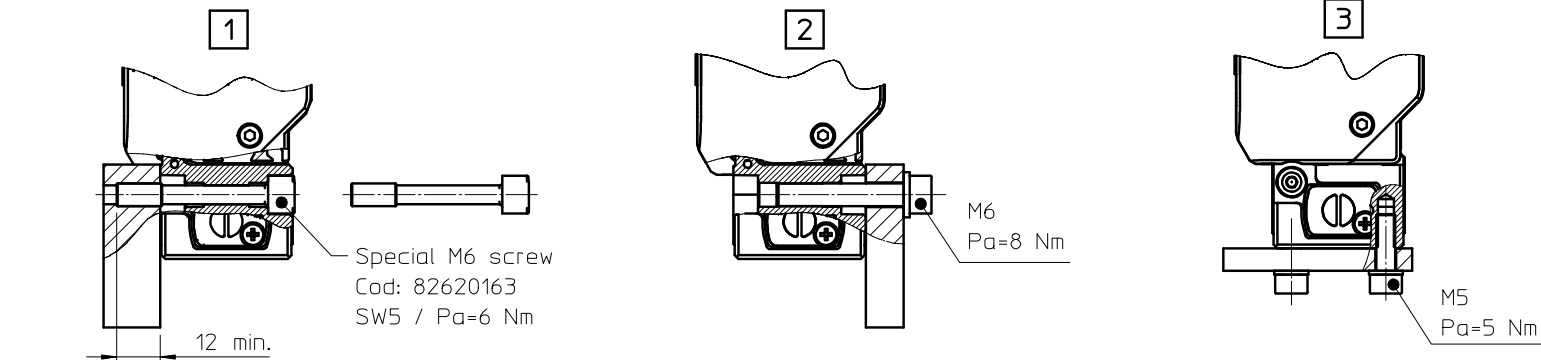
- (M) = Assembly sizing set by customer
- (S) = Alternative assembly sizing set by the customer
- (C) = Connector can be connected to both sides
- (R) = Can connect air intake to both sides
- (T) = Tape tensor
- (I) = Beginning of the measuring length
- (N1) = Mounting surfaces and threads must be clean and free of grease
- (E1) = Three different types of cable
 - Cable Ø6mm
 - Cable Ø4mm
 - Cable Ø10.5mm (with protection)
- Bend radius for flexible configuration for:
 - cable Ø6mm: R>60mm
 - cable Ø4mm: R>40mm
 - cable Ø10.5mm (with protection): R>60mm
- Bend radius for rigid configuration for:
 - cable Ø6mm: R>24mm
 - cable Ø4mm: R>16mm
 - cable Ø10.5mm (with protection): R>35mm
- (E2) = Cable support
- 1 2 3 = Mounting options
- CM = Measuring length
- L = Length of module
- G = Machine guideway
- Pa = Tightening torque
- SW = Size of the hex wrench

SCALE MOUNTING OPTIONS: HEAD (N1)
STANDARD HEAD

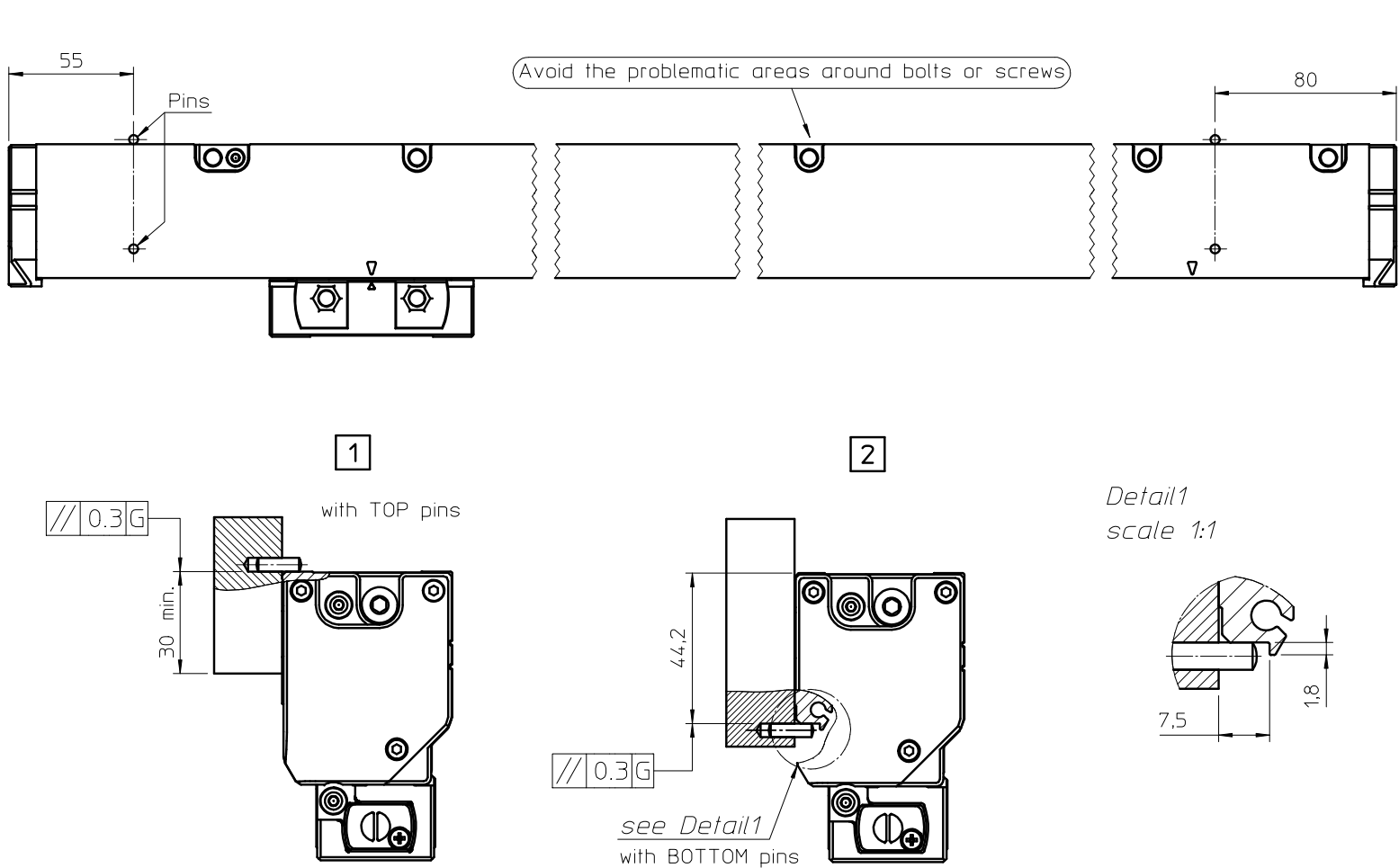


OPTIONAL HEAD

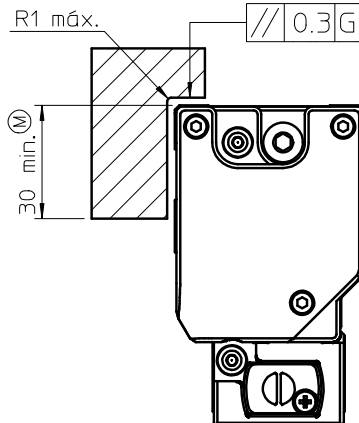
NOTE: rest of dimensions same of the standard head dimensions



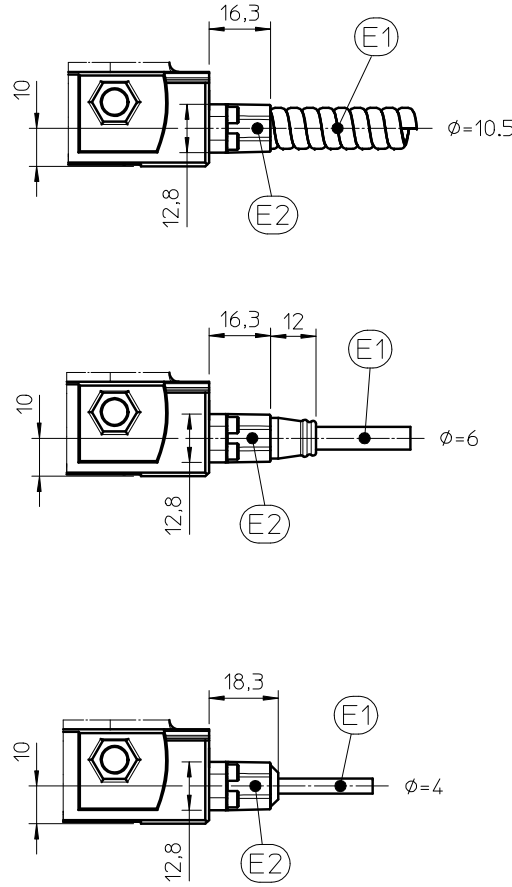
SCALE MOUNTING OPTIONS: SCALE (N1)
ON PINS



ON MACHINED SURFACE



DIFFERENT TYPES OF CONNECTOR CABLES



Rev.				Scale: 1:2	
Summary				Dimensions in mm	
Linear encoder model L3 single mirror				Tolerancing ISO 8015	
N° Designation				ISO 2768 - mH	
Quant.				< 6 mm: ±0.2 mm	
Material				Finish	
Treatment				Date	
Replaces				Fagor Automation	
Date 24-04-2019				S. Coop.	
Design by ZUNZU				20500 Mondragón	
Check by ZUNZU				FAGOR	