

	<b>Modifications report</b> <b>WinDNC version V6.02</b>	Date: 29/07/2015 05:48:04 PM
	Department MKT	Page 1 of 2

## MODIFICATIONS REPORT

**PRODUCT: WinDNC**

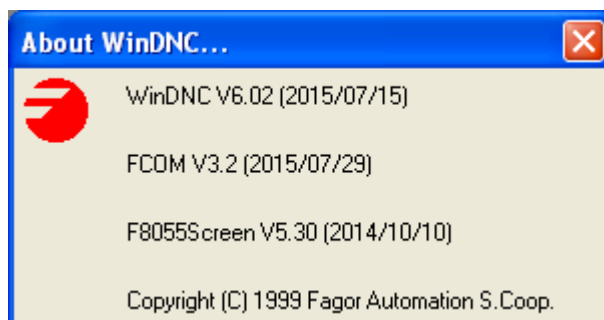
**Version V6.02**

### Index.

<b>1. CHECKSUM .....</b>	<b>2</b>
<b>2. MANUALS.....</b>	<b>2</b>
<b>3. STOP.....</b>	<b>2</b>
<b>4. INCOMPATIBILITIES.....</b>	<b>2</b>
<b>5. HARDWARE MODIFICATIONS.....</b>	<b>2</b>
<b>6. NEW FEATURES.....</b>	<b>2</b>
<b>7. MODIFICATIONS.....</b>	<b>2</b>
<b>8. CORRECTED ERRORS.....</b>	<b>2</b>
8.1 [WINDNC55-31] When saving a screenshot via telediagnosis, the name of the file is limited to 6 characters.....	2
8.2 [WINDNC55-32] WINDNC did not copy the PC files to the CNC correctly.....	2
8.3 [WINDNC55-33] When bringing a bmp to the PC, it was not displayed because it issued a message indicating "corrupted file".....	2
8.4 [WINDNC55-34] With V6.01, it failed with sending parameter tables with the name in lower case letters .....	2
8.5 [WINDNC55-36] WinDNC6.01 shows "WRONG FILE NAME" when plc files are sent from PC to CNC version V2.11 and file names are not in capital letters.....	2

## 1. [CHECKSUM](#)

Version	Checksum
V6.02	2015-07-29 15:15



## 2. [Manuals](#)

## 3. [Stop](#)

## 4. [Incompatibilities](#)

## 5. [Hardware modifications](#)

## 6. [New features](#)

## 7. [Modifications](#)

## 8. [Corrected errors](#)

- 8.1 [\[WINDNC55-31\] When saving a screenshot via telediagnosis, the name of the file is limited to 6 characters](#)
- 8.2 [\[WINDNC55-32\] WINDNC did not copy the PC files to the CNC correctly](#)
- 8.3 [\[WINDNC55-33\] When bringing a bmp to the PC, it was not displayed because it issued a message indicating "corrupted file"](#)
- 8.4 [\[WINDNC55-34\] With V6.01, it failed with sending parameter tables with the name in lower case letters](#)
- 8.5 [\[WINDNC55-36\] WinDNC6.01 shows "WRONG FILE NAME" when plc files are sent from PC to CNC version V2.11 and file names are not in capital letters.](#)